



**FEENIX**

# **SCREENS + LOUVRES**

---

**[www.feenix.com.au](http://www.feenix.com.au)**



# FEENIX

## Creating timeless facades

Since 1992, Feenix has provided a consistently high quality product, friendly and attentive service and installation, design and budget assistance, and highly competitive pricing.

Feenix was established, and is based, in Sydney, Australia. We also have a factory in Burleigh Heads QLD with a local, permanent team to ensure we can meet the demands of the East Coast building industry. We can also consult, manufacture, supply and install all balustrades, louvres & screens Australia-wide.

We specialise in Balustrades, Louvres & Screens in new commercial projects both in NSW and Queensland, including Balustrade replacement works to older buildings to comply to current Australian Standards.

We can provide high quality Fixed, Sliding & Operable Louvres & Screens to compliment your façade.

Feenix provides upfront design and costing assistance to many repeat clients to help achieve budget targets. We pay particular attention to the needs of our clients, and to the completion of all works in a timely manner to meet program requirements. We can provide a list of references from many satisfied clients.

### New South Wales

P: (02) 9516 0100  
7/53-57 Burrows Road  
Alexandria, NSW, 2015

### Queensland

P: 1300 FEENIX (333 649)  
6/5 Rothcote Court  
Burleigh Heads, QLD, 4220



**FEENIX**

[www.feenix.com.au](http://www.feenix.com.au)  
[info@feenix.com.au](mailto:info@feenix.com.au)



# WONDERLAND

81 O'Connor Street, Central Park  
Chippendale, Sydney

## THE PROJECT

Situated at the southern gateway to Sydney's CBD, Wonderland completes the urban renewal district of Central Park on the site of the former Carlton United Brewery. It offers a transition from city use and scale to the fine grain terraces and warehouses of Chippendale. Its form is a definitive urban design response, enhancing the outcomes of the masterplan provided at the time of the design competition by offering a diverse ground plane, additional park space, sun access and amenity in one of Sydney's most densely populated urban environments.

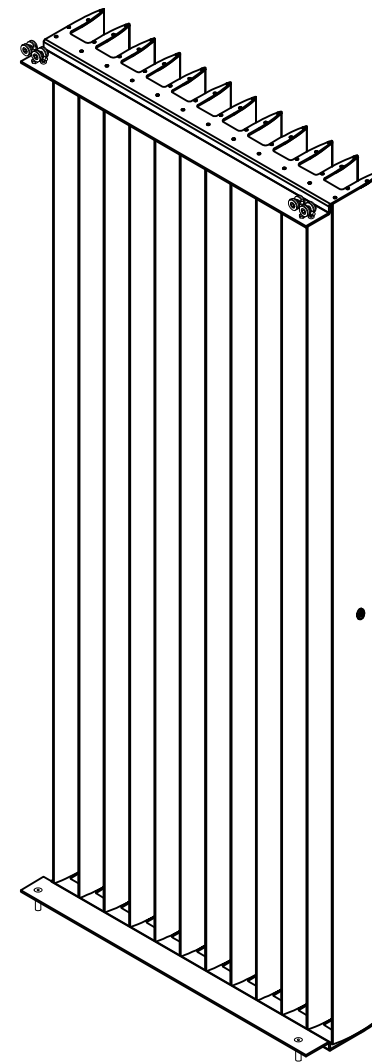
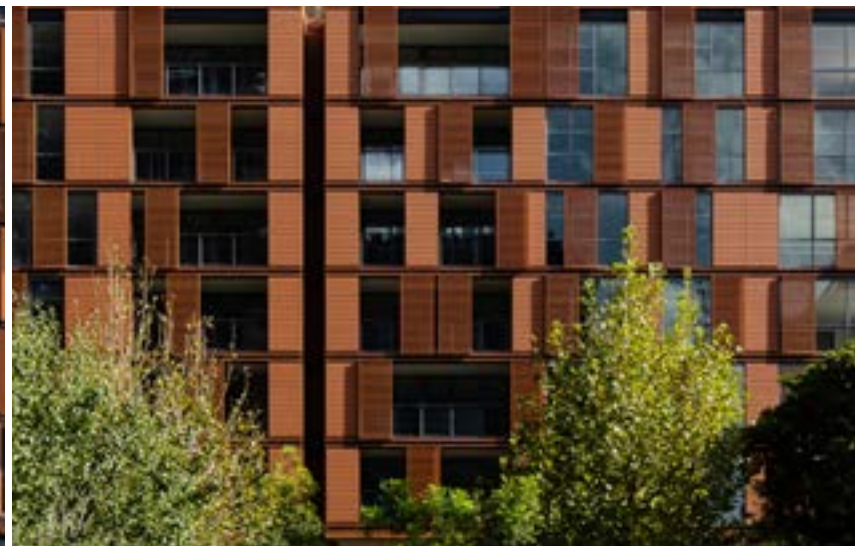
## OUR SCOPE

Feenix supplied and installed Aluminium Glazed Balustrades, Fixed Batten Screens, Perforated Mesh Sliding Screens & Privacy Screens.

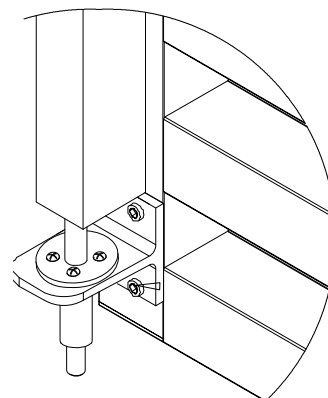
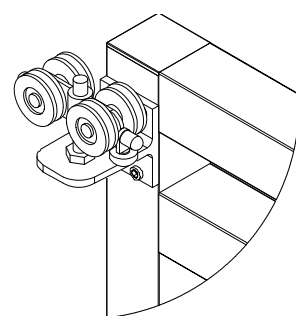
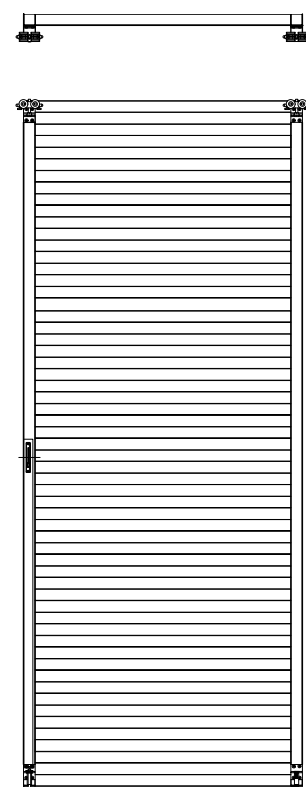
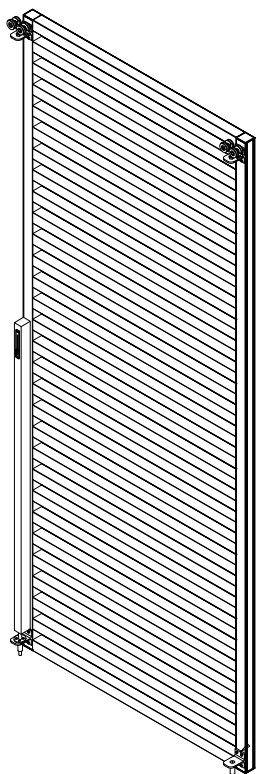
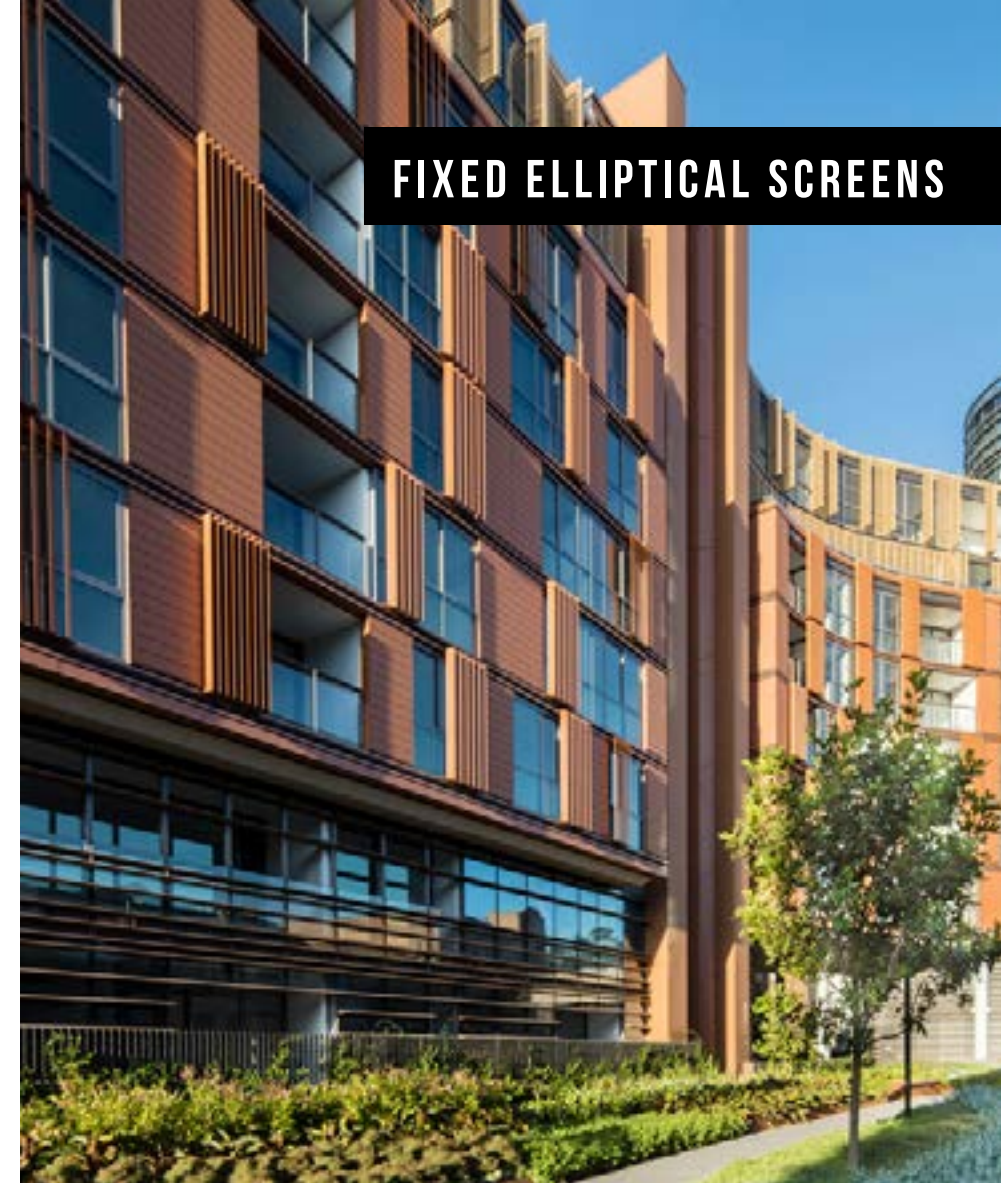




FIXED + SLIDING BATTEN SCREENS

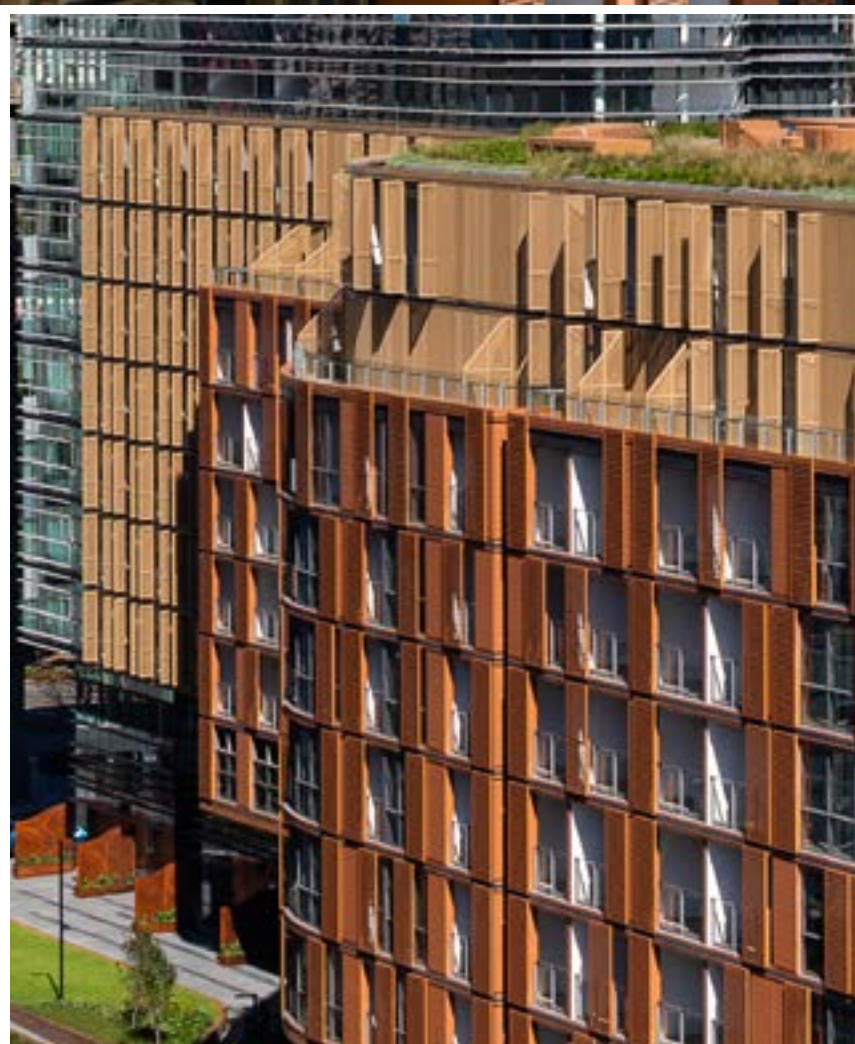
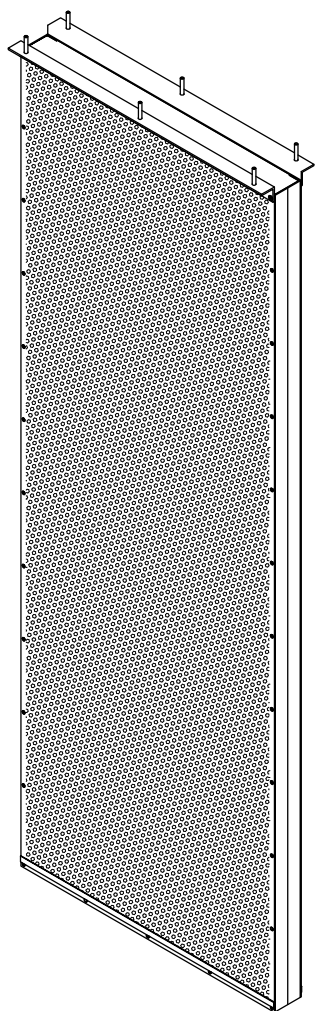


FIXED ELLIPTICAL SCREENS





## PERFORATED FIXED SLIDING SCREENS



FEENIX

Builder: Multiplex  
Years: 2018-2019  
Scope: Balustrades, Screens + Louvres





# ASCOT GREEN

240 Lancaster Road, Ascot,  
Queensland

## THE PROJECT

An apartment development located beside the Eagle Farm Racecourse in Ascot, providing the ultimate living for racing lovers.

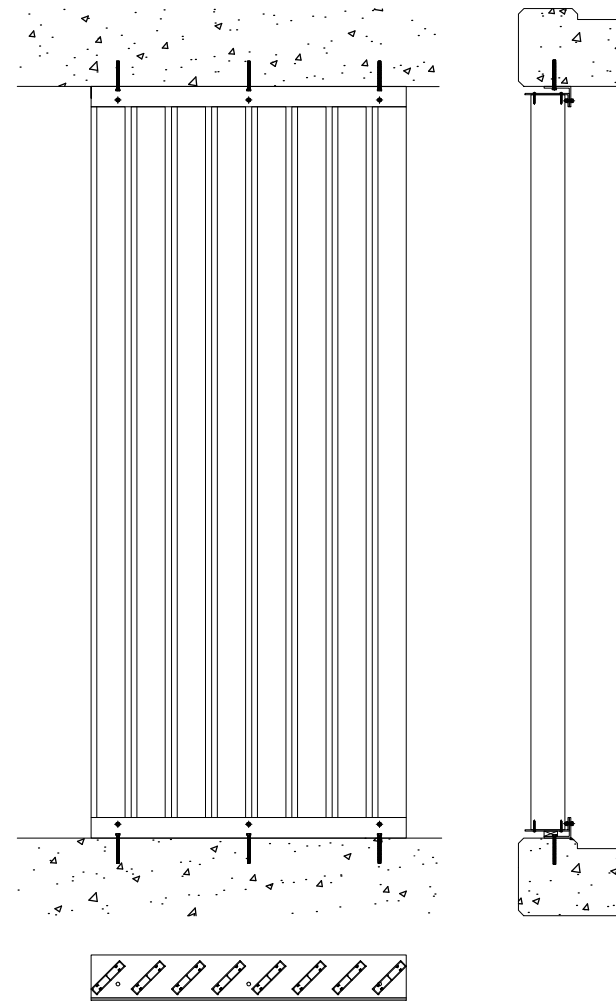
The prestige building was built by Mirvac Construction Pty Ltd.

## OUR SCOPE

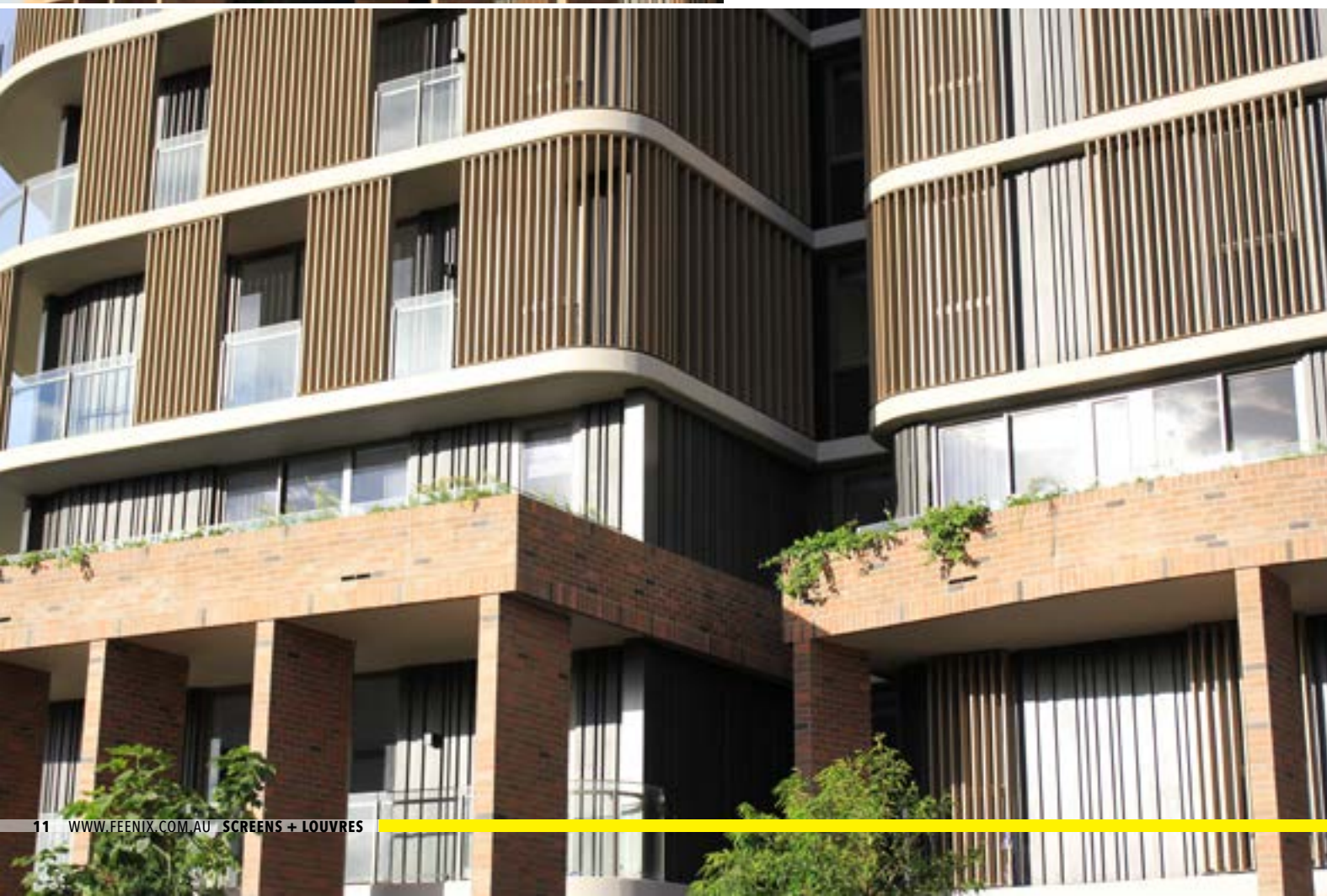
Feenix supplied and installed Aluminium Glazed Balustrades, Stainless Steel Balustrades, Louvres & Fencing to complete this unique facade.



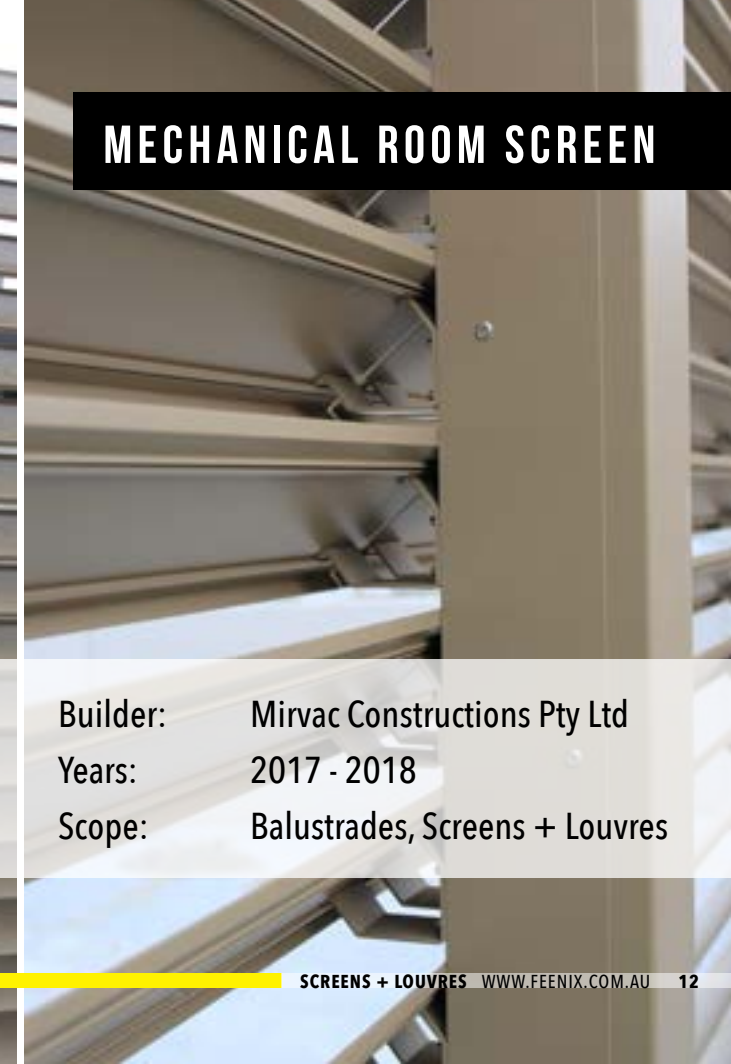
## FIXED VERTICAL SCREENS



## FIXED VERTICAL SCREEN



## MECHANICAL ROOM SCREEN



Builder: Mirvac Constructions Pty Ltd  
Years: 2017 - 2018  
Scope: Balustrades, Screens + Louvres



# THE BEACH HOTEL

2663 Gold Coast Highway, Broadbeach,  
Gold Coast, Queensland

## THE PROJECT

The Beach Hotel, has set a new benchmark in beachside living. The development comprises a mix of one and two bedroom apartments and ground floor retail on the site of the existing Beach Hotel on the Gold Coast Highway.

## OUR SCOPE

Feenix supplied and installed Glazed Balustrades, Pool Fencing, Privacy Louvres, Mechanical Room Louvres & Service Louvre Gates.



Builder: Multiplex Constructions Pty Ltd  
Years: 2016 - 2017  
Scope: Balustrades, Screens + Louvres



# GRANVILLE PLACE

38 Cowper Place, Granville,  
New South Wales

## THE PROJECT

SHOKAI Ausbao has now stepped into Granville and appointed Parkview to bring you a new Master piece development in the new heart of Granville, promising to set the new benchmark for modern urban living in the area and offers a vibrant place for its residents to live, shop and relax with everything on your doorsteps.

## OUR SCOPE

Feenix is supplying and installing Glazed Aluminium Balustrades, Privacy Screens, Multi-storey Facade Screens, Mechanical Room Louvres.

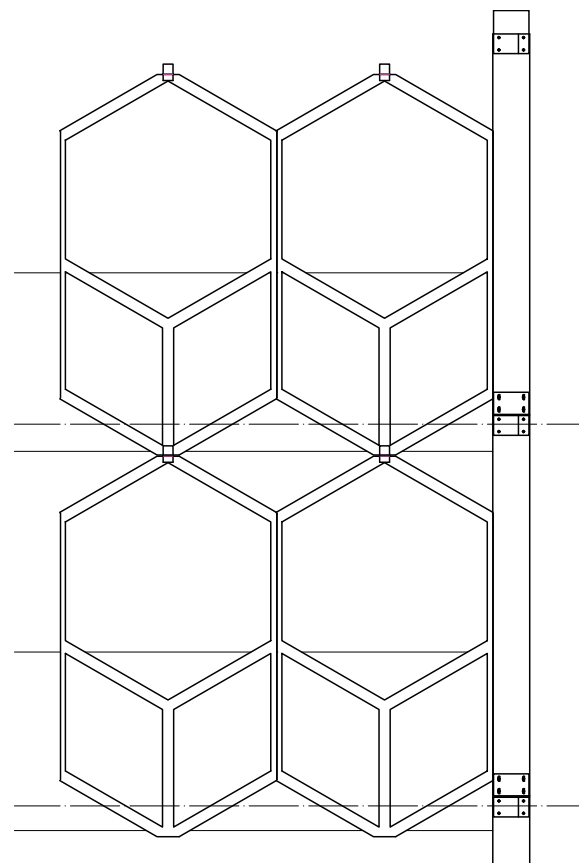


Builder: Parkview Construction Pty Ltd  
Years: 2019 - 2022  
Scope: Balustrades, Screens + Louvres





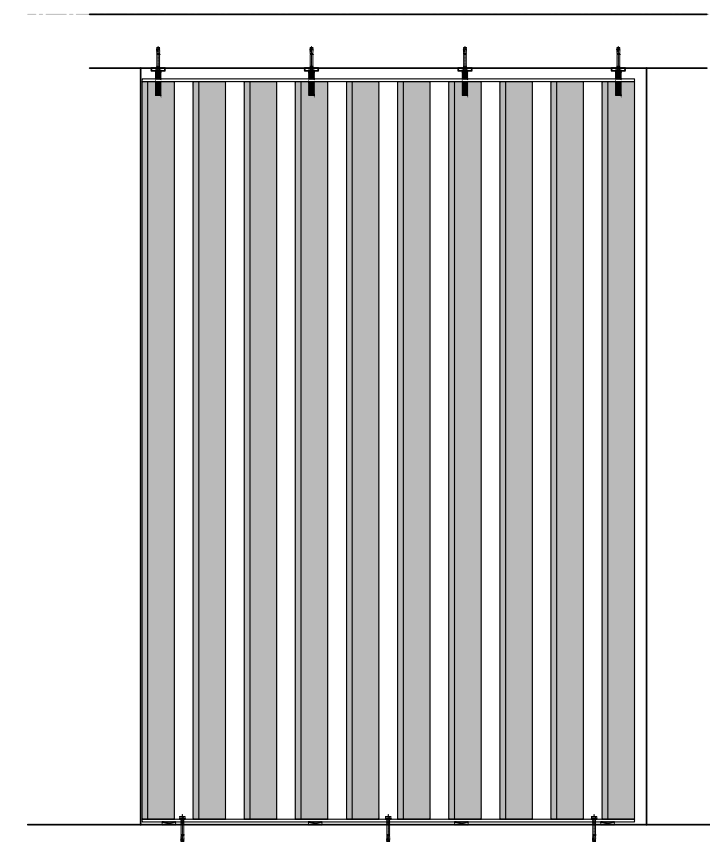
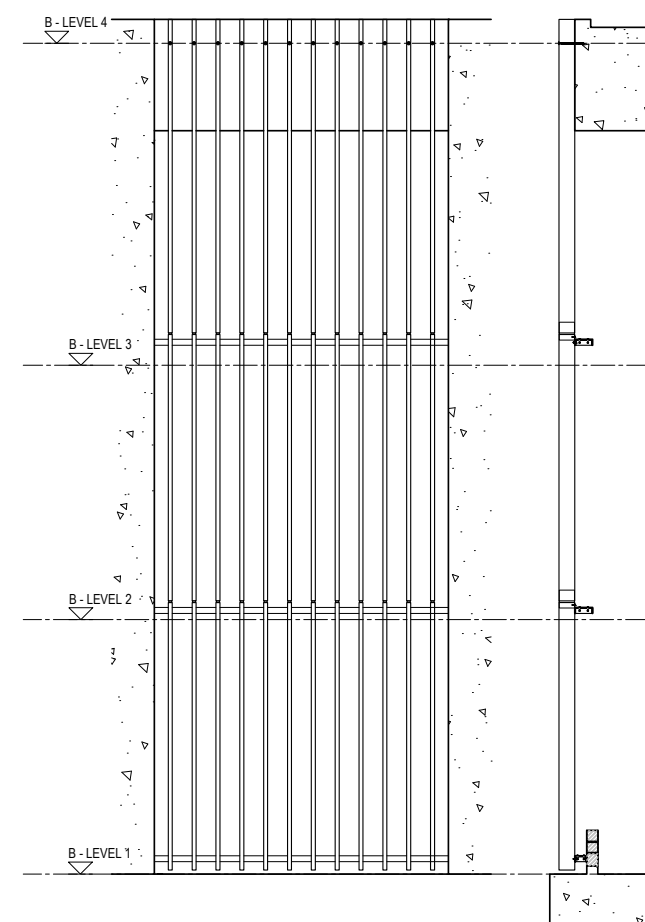
**MULTI-STOREY SCREEN**



**VERTICAL PRIVACY SCREEN**



**PHOTO REALIST RENDER BY OTHERS**



**PHOTO REALIST RENDER BY OTHERS**



# WEST VILLAGE

100 Church Street, Parramatta,  
New South Wales

## THE PROJECT

West Village will create a new benchmark for apartment living in Parramatta. Here, design comes with the precision of a Swiss timepiece, and rooftop views sparkle as bright as a diamond. Sought-after restaurants are located on the retail level, and city connections are as seamless as an Italian suit.

## OUR SCOPE

Feenix supplied and installed Glazed Aluminium Balustrades, Privacy Screens, Multi-storey Facade Screens, Mechanical Room Louvres.



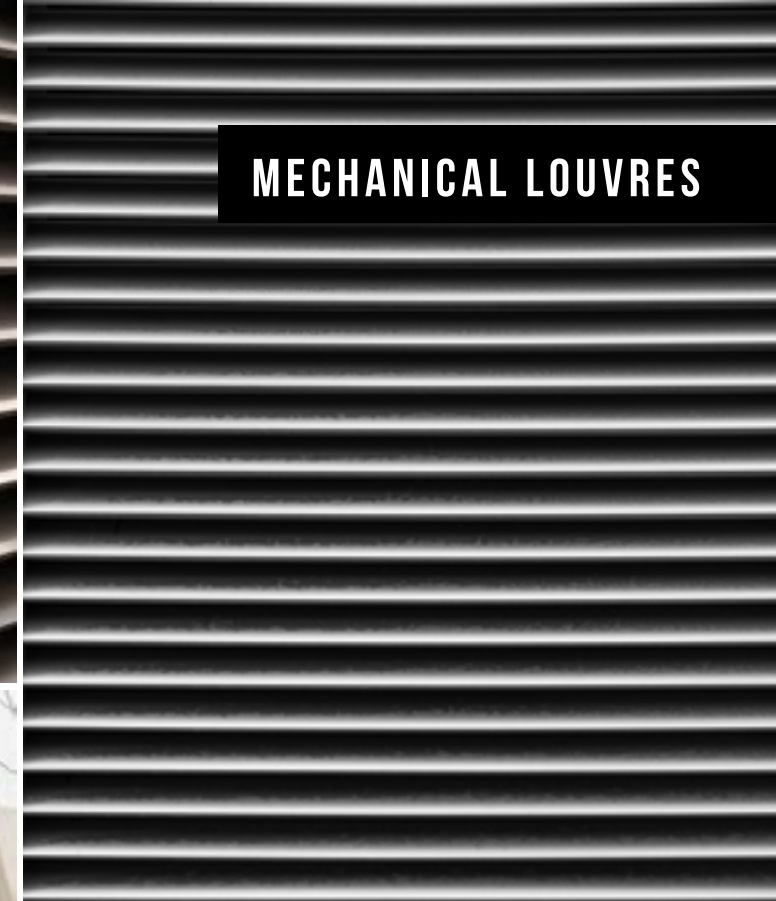
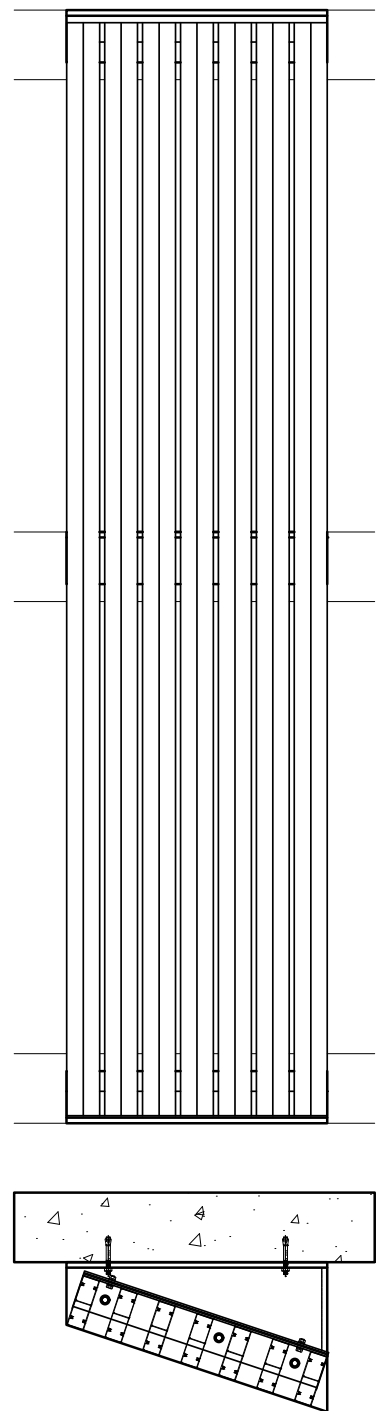
**FEENIX**

Builder: Parkview Constructions Pty Ltd  
Years: 2018 - 2020  
Scope: Balustrades, Screens + Louvres

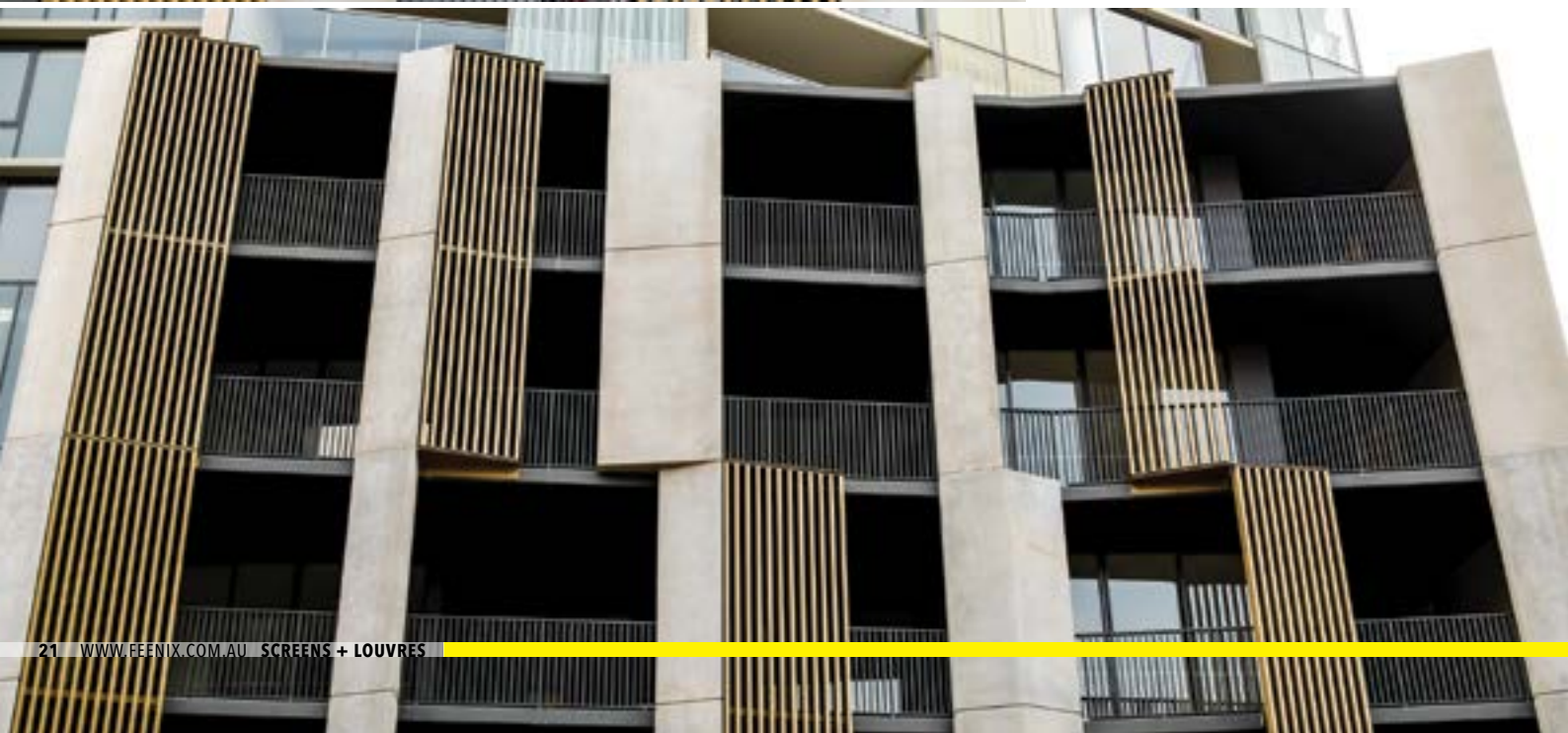
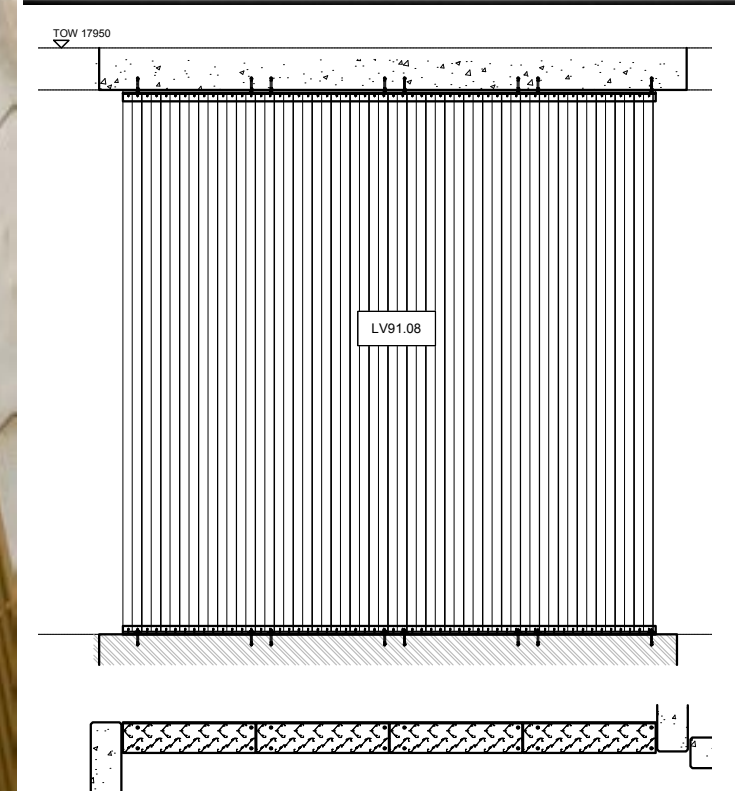




ANGLED BATTEN SCREEN



MECHANICAL LOUVRES





# ST LEONARDS SQUARE

Pacific Highway, St Leonards  
New South Wales

## THE PROJECT

St Leonards Square exemplifies Mirvac's reputation for sophisticated living in Sydney with superb amenity, exceptional harbour and city views and a vibrant ground floor plaza, this is an iconic destination that will define St Leonards for years to come.

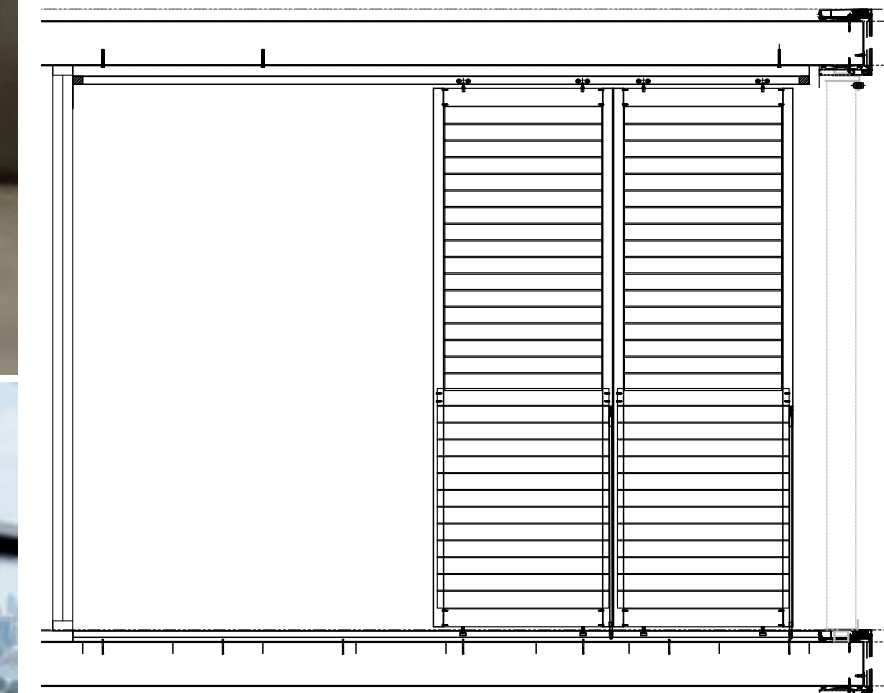
Comprising of 527 one, two and three bedroom residences and many penthouse releases, the towers will bring a valued sense of community to its prime location of St Leonards, uniting the public with open space with its ground floor plaza with gardens, seating areas and fountains.

## OUR SCOPE

Feenix supplied and installed Glazed Aluminium Balustrades, Privacy Screens, Multi-storey Facade Screens, Mechanical Room Louvres.



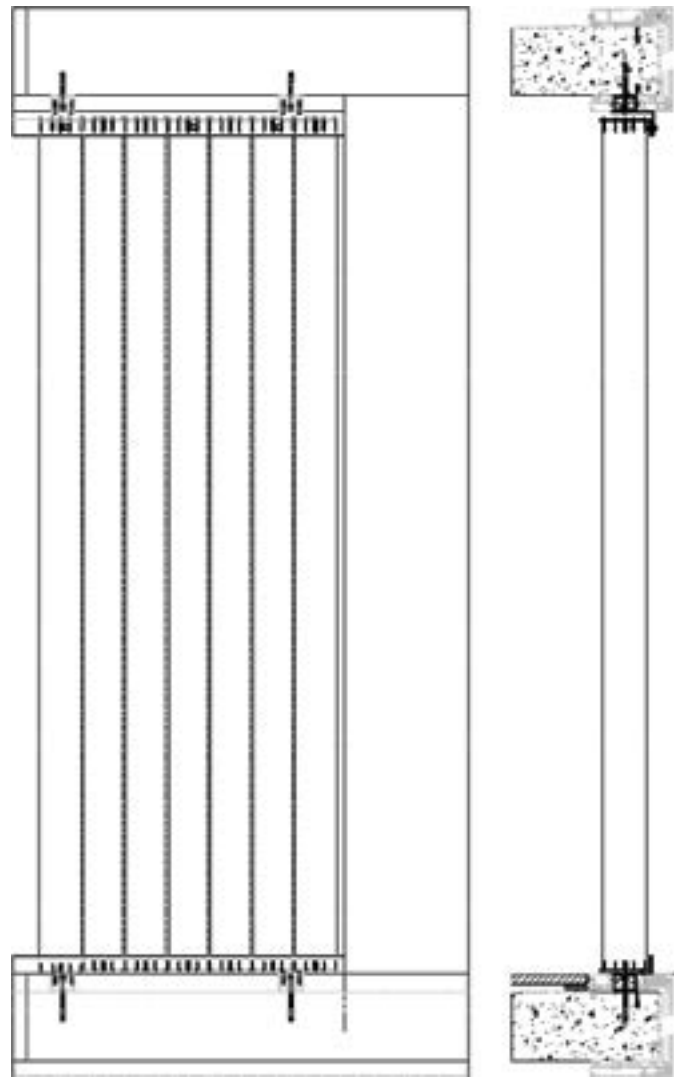
SLIDING PRIVACY SCREEN







VERTICAL PRIVACY SCREENS



MECHANICAL ROOM LOUVRES



FEENIX

Builder: Mirvac Constructions Pty Ltd  
 Years: 2018 - 2019  
 Scope: Balustrades, Screens + Louvres





**FEENIX**

**New South Wales**

P: (02) 9516 0100  
7/53-57 Burrows Road  
Alexandria, NSW, 2015

**Queensland**

P: 1300 FEENIX (333 649)  
6/5 Rothcote Court  
Burleigh Heads, QLD, 4220

---

**[www.feenix.com.au](http://www.feenix.com.au)  
[info@feenix.com.au](mailto:info@feenix.com.au)**